



CAT

**AUTOMATIC
CHAIN BARRIER.**

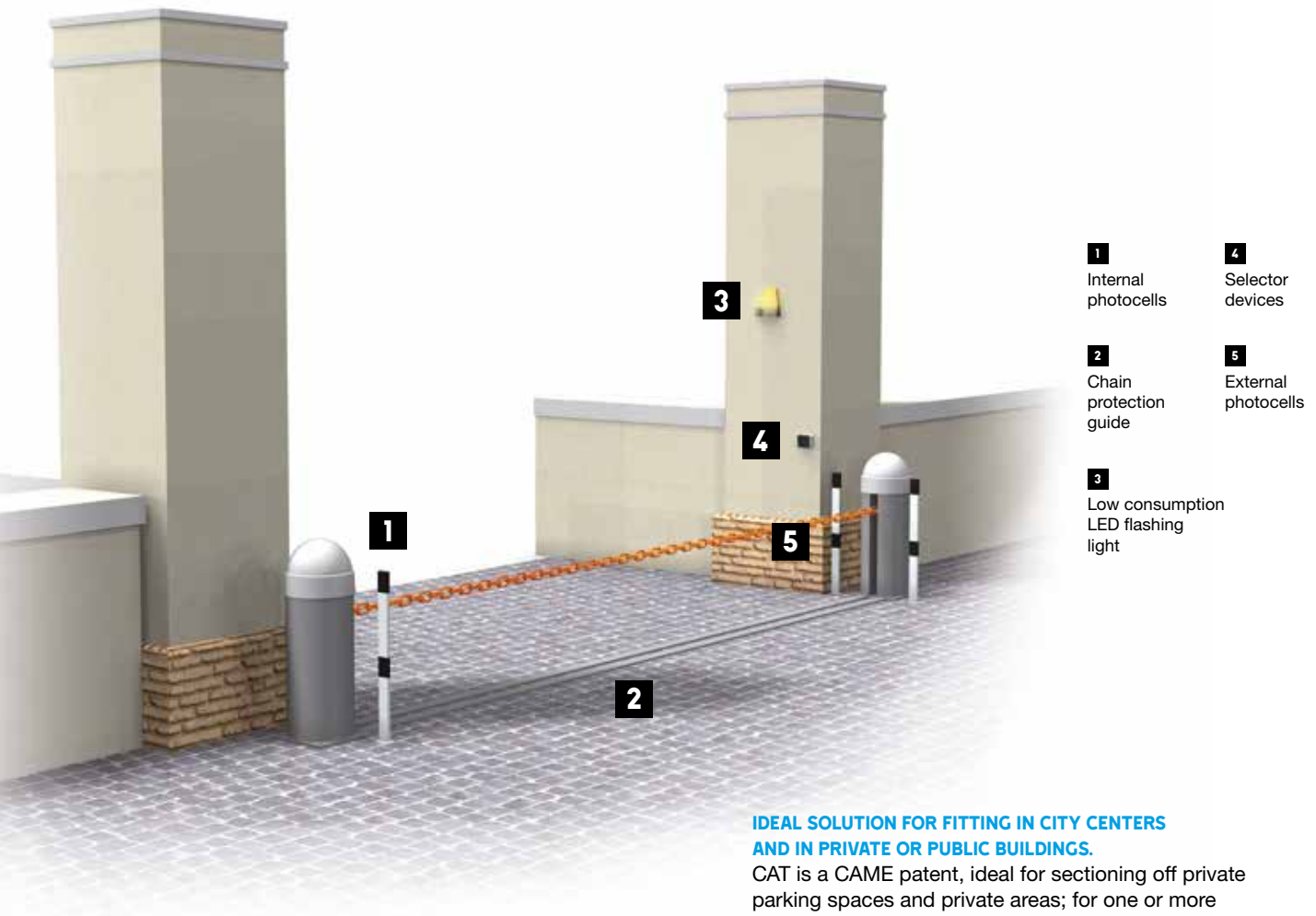
Passage width clearance
up to 16 m



CAME 

CAME.COM





- 1** Internal photocells
- 2** Chain protection guide
- 3** Low consumption LED flashing light
- 4** Selector devices
- 5** External photocells

IDEAL SOLUTION FOR FITTING IN CITY CENTERS AND IN PRIVATE OR PUBLIC BUILDINGS.

CAT is a CAME patent, ideal for sectioning off private parking spaces and private areas; for one or more cars. In historical city centers it also helps to control pedestrian or limited traffic areas. CAT controls passage widths up to 16 m (52.5 ft).



THE BENEFITS OF CAME CAT

- A CAME patented proposal for managing reserved parking areas.
- The guides guarantee the chain protection with closed passage.
- Easy and quick to install.

24 VOLT VERSION

- The 24 V DC version allows the obstacle detection and the chain speed adjustment.



GLOBAL ENTRY POINT CONTROL

The CAT chain barrier, can be connected to different access control systems for identifying, memorizing and enabling entry or exit only to authorized personnel.

SUPER VERSATILE

- Motor, control panel, radio receiver and entire set ups for operating even during power outages, are contained within the post.
- During black outs and emergencies, the special security lock with customized key lets you immediately release the chain.
- The control panel, built into the motor assembly, provides low 24 V DC voltage to the motor and all of the accessories connected to the system.

THE 24 V ELECTRONICS

- Opening and closing mechanical end stops, easy to adjust that require no further setting.
- Automatic closing after a preset time trimmer adjustable.
- "Press to hold" command, requires continuous pressure on the command button for the entire cycle, which also allows you to immediately stop the chain.

CAT-X24 TECHNOLOGY



GUARANTEED BY 24 VOLTS

The 24 V gearmotors are suitable for intensive use. This icon also means that the product runs on low voltage.



READ UP AT CAME.COM ABOUT THE FULL RANGE OF CAME OPERATORS AND ACCESSORIES



TRANSMITTERS



PHOTOCELLS



SELECTORS
KEY-OPERATED



SELECTORS
WITH KEYPAD

CAME is a leading home-automation, industrial and special plant-technology projects manufacturing company. We provide full range of solutions: gate and garage door operators, shutter and awning winding-motors, home-automation control, burglar-proof systems, and video entry systems Technology and reliability to serve your business with solutions designed for automating industrial doors, automatic doors, street barriers, turnstiles, access control and parking facility systems.

CAME.COM

CAME AUTOMATED OPERATORS AND ACCESS CONTROL

SLIDING GATE OPERATORS



SWING-GATE OPERATOR



AUTOMATED OPERATORS FOR SECTIONAL AND GARAGE DOORS



AUTOMATIC STREET BARRIERS



OPERATORS FOR INDUSTRIAL ENTRANCES



AUTOMATED OPERATORS FOR ROLLER SHUTTERS



AUTOMATIC TURNSTILES AND ACCESS CONTROL



AUTOMATIC PARKING SYSTEMS



ACCESSORIES



COMPLETE SYSTEMS



CUSTOMIZED ELECTRONICS FOR YOUR NEEDS!

CAT is available in both the 230 V AC and 24 V DC versions.

The table shows the main control panel characteristics matched to the gearmotors.

CONTROL BOARD / CONTROL PANEL

	CAT-X ZC5	CAT-X24 ZL37C
SAFETY FEATURES		
PREFLASHING while opening or closing		■
REOPEN while closing	■	■
TOTAL STOP	■	■
OBSTRUCTION DETECTED in front of photocells		■
AMPEROMETRIC DETECTION		■
CONTROL FUNCTIONS		
OPEN ONLY or CLOSE ONLY button connection	■	■
OPEN-CLOSE-INVERSION from transmitter and/or from button	■	■
MAINTAINED ACTION		■
IMMEDIATE CLOSING		■
CHARACTERISTICS		
FLASHING LIGHT connection	■	■
Antenna	■	■
GATE OPEN FLASHING LIGHT connection	■	■
WARNING LIGHT CLOSED connection	■	
OPERATING TIME adjustment	■	
SELF-LEARNING of the transmitter's RADIO CODE	■	■
Adjustable AUTOMATIC RECLOSING TIME	■	■
EMERGENCY BATTERY operation (optional)		■
Adjustable GATE TRAVEL and SLOW DOWN speeds		■

■ 230 V AC ■ 24 V AC DC

THE RANGE



001CAT-X
Pillar with gearmotor
230V

001CAT-X24
Pillar with gearmotor
24V

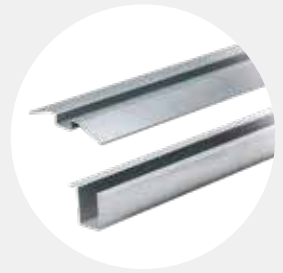


001CAT-I
Pillar with counter-weight
and chain hook



001CAT-5
Chain from 9 mm,
up to 8 m

001CAT-15
Chain from 5 mm,
up to 16 m



001CAR-2
Outer guide
L = 2 m

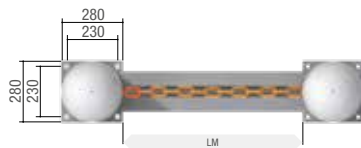
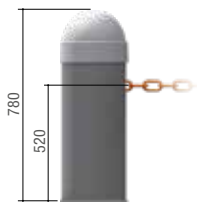
001CAR-4
Inner guide
L = 2 m



RAL 9006
Cover colour.

Code 053 0837
Cabinet colour GREY TEXTURED.

DIMENSIONS (MM)



LM = Max. width
passage width clearance

TECHNICAL CHARACTERISTICS

MODELS	CAT-X	CAT-X24
Protection Rating (IP)	54	54
Power supply (V - 50/60 Hz)	230 AC	230 AC
Motor power supply (V)	230 AC 50/60 Hz	24 DC
Current draw (A)	2.7	10 Max.
Power (W)	300	240
Intermittence/Duty-cycle (%)	30	HEAVY-DUTY SERVICE
Working temperature (°C)	-20 to +55	-20 to +55
Motor thermal protection (°C)	150	-

■ 230 V AC ■ 24 V AC DC

LIMITS TO USE

MODELS	CAT-15 (5 mm chain)	CAT-5 (9 mm chain)
Maximum clearance width of the passage (m)	16	8

© KADENBE18 - 2018 - EN

CAME reserves the right to make any changes to this document at any time. Even partial reproduction is prohibited.



CAME.COM

CAME

CAME S.p.A.

Via Martiri della Libertà, 15
31030 Dosson di Casier
Treviso - ITALY

We are a leading multinational supplier of integrated high-tech solutions for automating residential, public and urban settings, which generate intelligent spaces for the wellbeing of people.

- GATE OPERATORS
- VIDEO ENTRY SYSTEMS KIT
- BURGLAR ALARM SYSTEM
- HOME AUTOMATION
- TEMPERATURE CONTROL
- OPERATORS FOR AWNINGS AND SHUTTERS
- GARAGE DOORS AND INDUSTRIAL DOORS
- AUTOMATIC DOORS
- TURNSTILES AND ACCESS CONTROL
- BOLLARDS AND PERIMETER SECURITY
- PARKING FACILITIES AND ROAD BARRIERS

