



PHOTOCELLS

SAFETY ACCESSORIES.

Safety devices
for automatic gates

CAME 

[CAME.COM](https://www.came.com)





SAFETY PHOTOCELLS

To complete power-operated systems, Came offers a complete range of safety accessories, that are always comply with current European Regulations. The photocells, cordless and hard-wired, and the sensitive safety-edge to fit onto both gate and garage door, are set up so you may always have a perfectly certifiable, approved and safe system - a very important added value when it comes to modern day operators.

The CAME DELTA S and DIR series, are equipped with synchronized infrared beam technology, which mean you can fit multiple pairs of photocell to the same system, even at two different heights and/or next to each other, without them interfering with each other and without having to invert the transmitters' or receivers' positions.



DELTA-E
surface-mounted

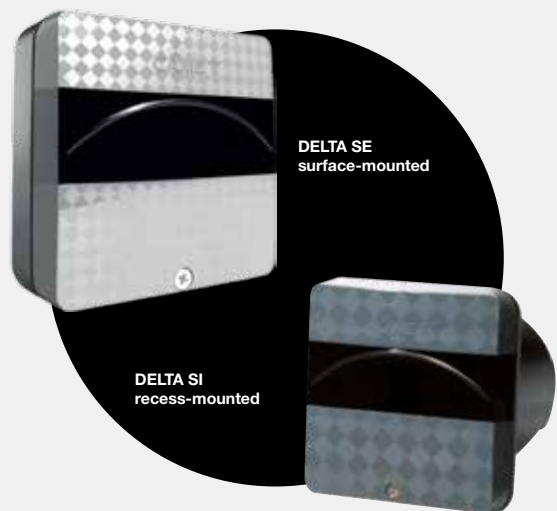
DELTA-I
recess-mounted



DELTA S

Synchronized infrared beam photocells

DELTA is the infrared beam photocell;
DELTA S is the synchronized infrared beam photocell.
Both have a 20 m range and come in both the surface-mounted or recess-mounted version, complete with casing. Also dedicated aluminium posts are available for fitting either in one-way or two-way.



DELTA SE
surface-mounted

DELTA SI
recess-mounted



DIR

Synchronized infrared beam photocell

Dir is the synchronized infrared-beam outdoor photocell with ranges of 10, 20 or 30 m. Among the dedicated accessories available we have the aluminium or PVC posts, even in double-height versions or with special shock-proof aluminium alloy casing.



CORDLESS infrared beam photocell

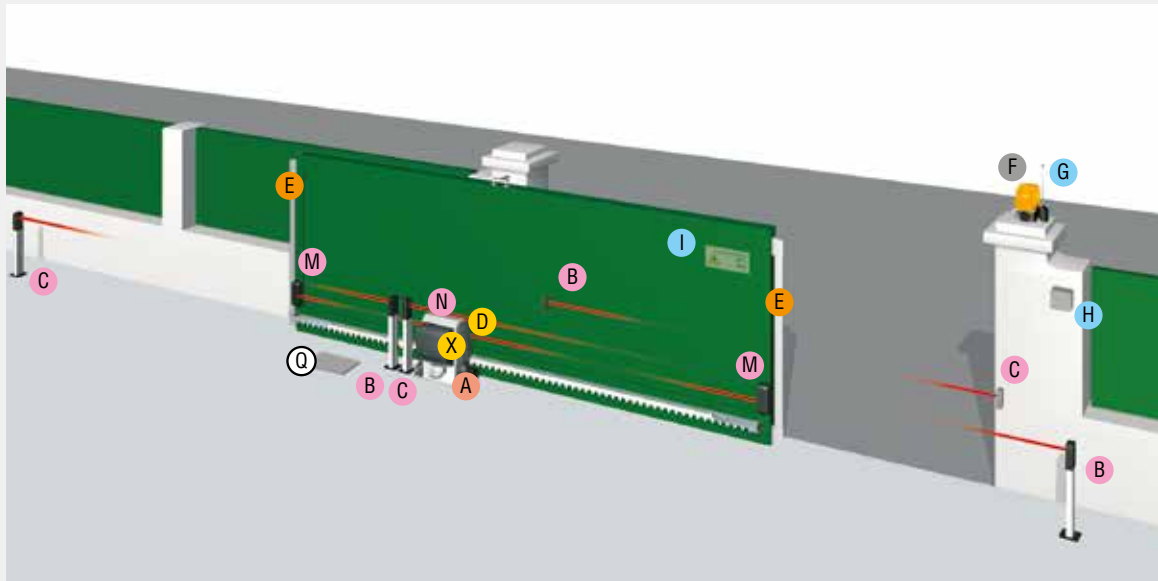
- Cordless photocells suited for easily setting up the perimeter coverage, thanks to the two-way beam of repeaters and transmitters.
- Battery powered for an even simpler use.
- The DBS01 and DBS02 infrared ray photocells transmit the signal of the safety edge installed on the sliding leaf, protecting movement and guaranteeing total safety.



CORDLESS TECHNOLOGY

Thanks to the infrared transmission of the signal, it is possible to protect the moving leaf of the system with the sensitive safety-edge without the need for complex wiring.

APPLICATION EXAMPLES



- | | |
|---|--|
| A Operator (control board-fitted gearmotor) | H Control selector (Key- Code - Card or transponder fobkey) |
| B TX Photocells | I Plate |
| C RX photocells | M Cordless TX Photocells |
| D Power outage emergency operation card. | N TX Photocells |
| E Sensitive safety-edges | Q Junction box |
| F Flashing light | X Radio frequency card |
| G Antenna | |



RIO SYSTEM 2.0

Wireless safety system

RIO System 2.0 is the innovative radio-based safety system that needs no wired connection between the control module and the safety accessories. This feature makes for very rapid installation times.

Control module, photocells, sensitive safety-edge and flashing light all make up a complete system based on totally wireless technology. This is ideal for bringing up to code any existing systems or for rapidly installing entirely new systems. The control module is to be connected to the operator's control panel, whereas the other modules interact via radio.

RIO SYSTEM 2.0 MAIN FEATURES



806SS-0030

Wireless flashing light with high luminosity, it captures attention offering maximum visibility and has a high operating autonomy.



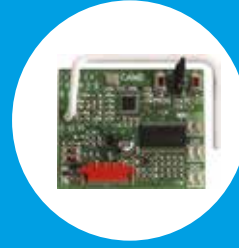
806SS-0050

Surface mounted radio-control module for managing wireless accessories.



806SS-0010

Pair of wireless infrared-beam photocells. Infrared range: maximum C-distance of 10 m.



806SS-0040

Snap-in radio control module for controlling wireless accessories.



CAME is a market leading home, industrial, and special technological projects automation manufacturing company. A full range of household solutions: from operators for gates and garage doors, to shutter and awning winding motors, and even home automation control, to burglar proof and video entry systems. Technology and reliability to serve your business, thanks to solutions designed for powering large industrial doors, automatic doors, street barriers, turnstiles, access control systems and parking facilities.

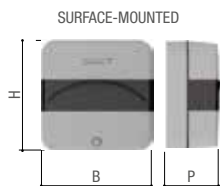
CAME.COM

PHOTOCELLS

DELTA - DELTA S



DIMENSIONS (MM)



TECHNICAL CHARACTERISTICS

MODELS	DELTA-I · DELTA-E	DELTA-SI · DELTA-SE
Protection rating (IP)	54	54
Power supply (V)	12 - 24 AC - DC	12 - 24 AC - DC
Power draw	110	70
The relay contacts are rated for max. 24 V (A)	0.5	0.5
Working temperature (°C)	-20 to +55	-20 to +55
Item	ABS Polycarbonate	ABS Polycarbonate

■ 12 - 24 V AC - DC

DIMENSIONS TABLE

MODELS	MOUNTING	B (mm)	H (mm)	P (mm)	Q (mm)
DELTA-E · DELTA-SE	SURFACE-MOUNTED	70	70	36	-
DELTA-I · DELTA-SI	RECESS-MOUNTED	70	70	52	16

LIMITS TO USE (M)

Max wireless range (m)	20
------------------------	----

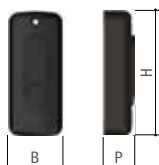
RECESS-MOUNTED



DIR



DIMENSIONS (MM)



TECHNICAL CHARACTERISTICS

MODELS	DIR10 · DIR20 · DIR30
Protection rating (IP)	54
Power supply (V)	12 - 24 AC - DC
Power draw	60
The relay contacts are rated for max. 24 V (A)	0.5
Working temperature (°C)	-20 to +55
Item	ABS Polycarbonate

■ 12 - 24 V AC - DC

DIMENSIONS TABLE

MODELS	MOUNTING	B (mm)	H (mm)	P (mm)
DIR10 · DIR20 · DIR30 · DIRZ	SURFACE-MOUNTED	46	108	23

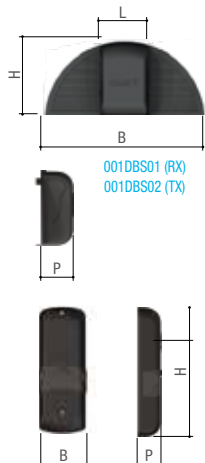
LIMITS TO USE (M)

MODELS	DIR 10	DIR 20	DIR 30
Max wireless range (m)	10	20	30

DB



DIMENSIONS (MM)



001DBS01 (RX)
001DBS02 (TX)

TECHNICAL CHARACTERISTICS

MODELS	DBC01	DBS01 · DBS02	DBCT
Protection rating (IP)	54	54	54
Power supply (V)	12 - 24 AC - DC (only RX)	12 - 24 AC - DC (only RX)	6
Batteries (V)	-	(4x) AAA 1.5 V	(4x) AAA 1.5 V
Relay rated for 24 V (mA)	500	1	-
Power draw	TX 70 µA - RX 48 mA	TX 70 µA - RX 48 mA	70
Working temperature (°C)	-20 to +55	-20 to +55	-20 to +55
Item	ABS Polycarbonate	ABS Polycarbonate	ABS Polycarbonate

■ 12 - 24 V AC - DC

DIMENSIONS TABLE

MODELS	MOUNTING	B (mm)	L (mm)	H (mm)	P (mm)
DBC01 · DBS01 (TX) · DBS02 (TX) · DBCT	SURFACE-MOUNTED	52	-	140	25
DBS01 (RX) · DBS02 (RX)	SURFACE-MOUNTED	150	46	71	28

LIMITS TO USE (M)

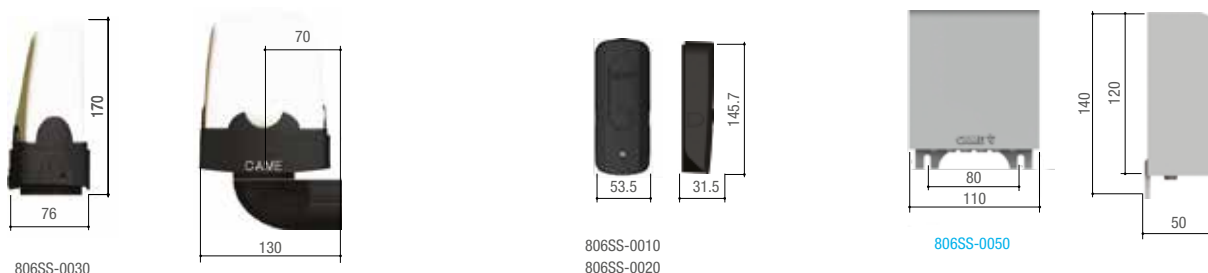
Max wireless range (m)	10
------------------------	----

001DBC01
001DBS01 (TX)
001DBS02 (TX)
001DBCT (TX)

TECHNICAL CHARACTERISTICS

MODELS	806SS-0020	806SS-0030	806SS-0050	806SS-0040
Protection rating (IP)	54	54	55	-
Power supply (V)	3	3	24AC- DC	5
Radio frequency signal (MHz)	868.95	868.95- 869.85	868.95- 869.85	868.95
The relay contacts are rated for max. 24 V (A)	-	-	1	-
Range (m)	-	30	30	-
Working temperature (°C)	-20 to +55	-20 to +55	-20 to +55	-20 to +55
Item	ABS- POLYCARBONATE	ABS- POLYCARBONATE	ABS- POLYCARBONATE	-

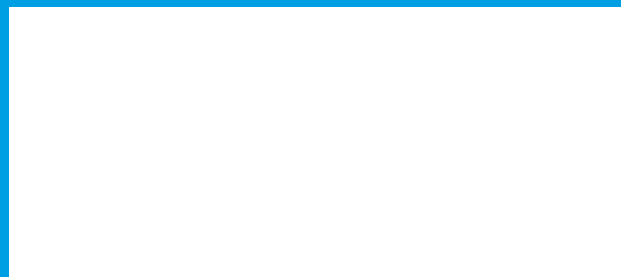
DIMENSIONS (MM)



© KADENBQE18 - 2018 - EN
 CAME RESERVES THE RIGHT TO MAKE ANY CHANGES TO THIS DOCUMENT, AT ANY TIME. EVEN PARTIAL REPRODUCTION IS PROHIBITED.



CAME S.p.A.
 has the following Quality,
 Environmental and Safety certifications:
 UNI EN ISO 9001
 UNI EN ISO 14001
 BS OHSAS 18001



CAME S.p.A.
 Via Martiri della Libertà, 15
 31030 Dosson di Casier
 Treviso - ITALY